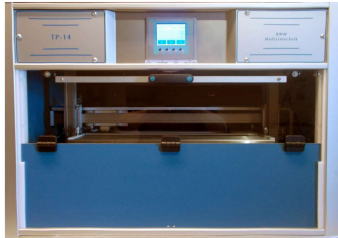


# Histology Pathology Instruments



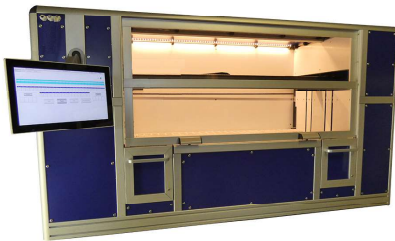
## Tissue Processor



## Embedding



## Staining



## Cooling Plate



## Water Bath

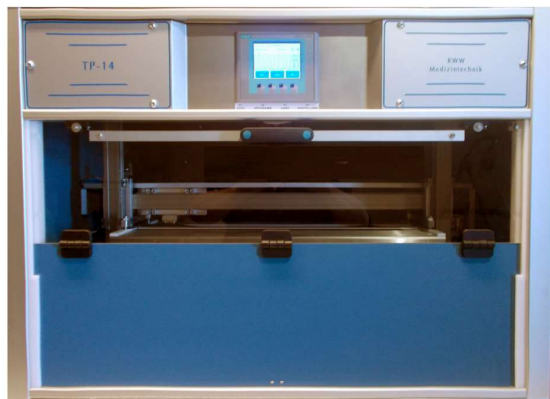


## MEPHISTO 12

### Tissue Processor TP 12

## MEPHISTO 16

### Tissue Processor TP 16



Tissue processor with 12 or 16 stations.  
Capacity: 100 or 300 cassettes.  
Alternatively in the short program up to 1500 biopsies daily.

6 programs freely selectable and storable.

Agitation adjustable.

Weekend program with up to 99 hours start delay.

Emergency power supply for securing the Tissue samples.

Connection to a laboratory exhaust is possible.

No valves, no clogged pipes, no cleaning fluids, no cleaning program, no maintenance costs, intervention in the current program is possible at any time.

Intuitively operable programming interface.



Start screen



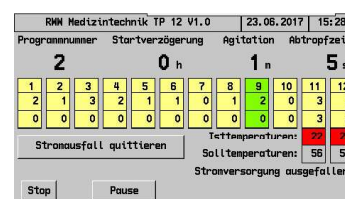
Password protected



Retrievable event log



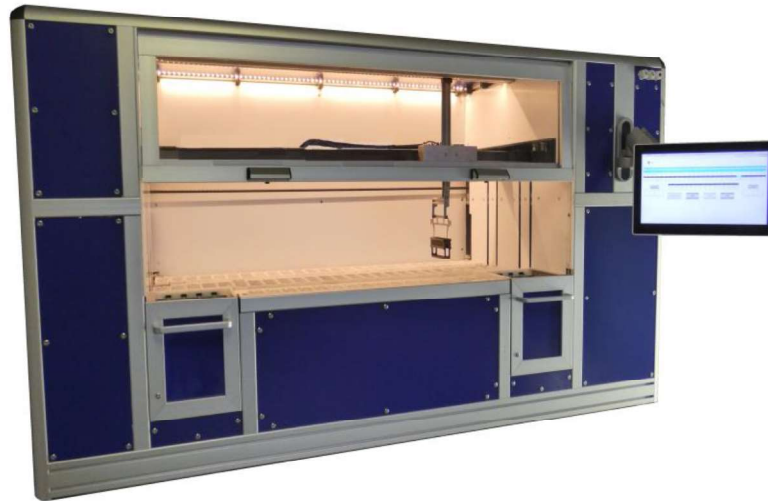
Simple solvent change.  
The front of the device can be opened completely.



Battery backup

Technical Data	Details
Dimensions TP16	W 1100 x D 600 x H 769 (mm)
Dimensions TP12	W 895 x D 630 x H 769 (mm)
Reagents Container	Stainless steel 2,0 liters
Power supply	230V / 50Hz / 1,2KW
Weight	66 kg / 77kg

# Linear Stainer LS 72



The growing need for space in histology laboratories, driven by the increasing number and size of devices, poses significant challenges for users. Our innovative solution addresses this issue by integrating two staining units within a single housing.

Traditional staining machines typically feature only one arm for moving slide baskets, often limiting their capacity—handling more than five slide baskets simultaneously is uncommon due to varying staining protocols. As a result, users frequently require an additional staining unit, usually a linear stainer capable of managing multiple slide baskets at once.

Our multifunctional staining machine seamlessly combines both device concepts. Designed to meet the highest standards, it offers a maximum throughput of 1,800 slides per hour.

## Key Features:

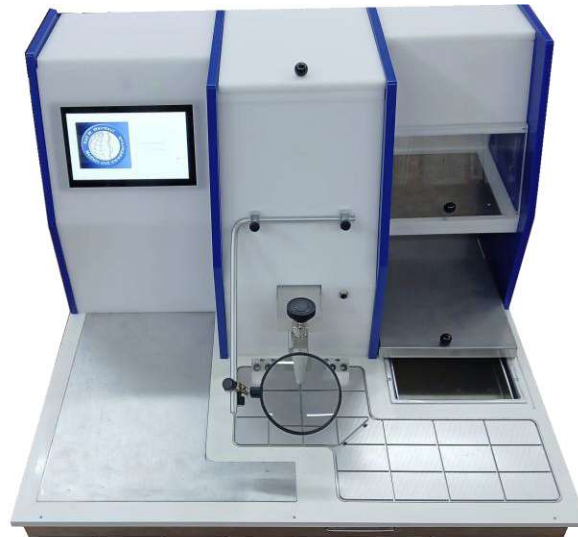
- 26 positions in the linear staining row, with adjustable dwell times ranging from 45 seconds to 5 minutes
- Capacity to store up to 20 staining protocols
- Simultaneous staining with up to 40 slide baskets
- Loading and unloading stations, each accommodating 4 slide baskets
- Up to 6 freshwater cuvettes
- Adjustable agitation settings
- Optional built-in activated carbon filter or compatibility with existing exhaust air systems
- Adaptable to nearly all automatic cover-slippers
- Slide baskets available for 20 or 30 slides
- Integrated Reagent Management Program

Technical Data	Details
Dimensions (W x D x H)	200 x 75 x 120c (cm)
Connection values	230V / 50Hz / 1.2KW
Weight	230 kg

---

## Paraffin Embedding Center ECC

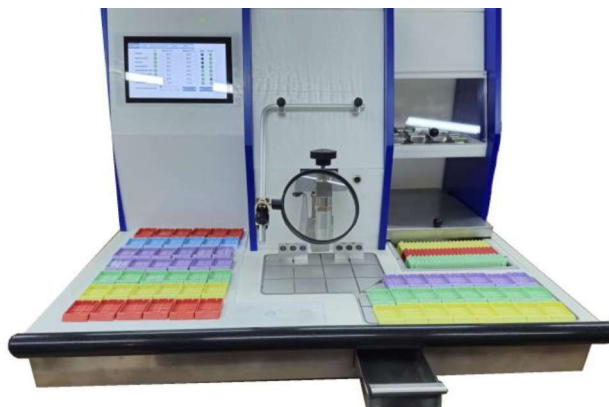
---



Compact unit consisting of  
A paraffin dispenser with a 4.5-liter paraffin supply.  
A heated tray for cassettes or whole baskets of almost any manufacturer.  
A heated compartment for the pouring cups.  
A cooling plate with space for 50 cassettes.  
One cooling point.  
A heated work surface for approx. 24 cassettes.  
A drawer for the collection of excess paraffin.

### Equipment:

Adjustable paraffin outlet, lighting and optional magnifier and/or foot switch.  
Touch screen for setting and monitoring all temperatures, as well as for  
and programming of operating times.



Temperatur Settings

Weekly Timer

Technical data:  
Size: B630 x T550 x H400mm,  
230V/50Hz/1KW  
Artikel Nr.: RWECC



# Electric Heated Tweezers



Order No. 4509200S2

### Compatibility and Features

These electric heated tweezers are designed to be fully compatible with our tweezers station. They support a range of tweezer sizes, accommodating tips from 0.5 mm to 4 mm. Each tweezer is color-coded by size, ensuring effortless identification and orientation during use.

### Heating and Safety Specifications

The heating element is concentrated at the tip of each tweezer, maintaining a consistent operating temperature of approximately 68 degrees. The connecting cable is engineered for durability, being both highly flexible and heat resistant up to 80 degrees, which ensures safe and reliable operation.

### Product Variants

Order Number	Size	Color Code	
4709205	0.5 mm	Blue	
4709210	1 mm	Red	
4709220	2 mm	Yellow	
4709240	4 mm	Green	

### Additional Compatibility

All tweezers are also suitable for connection to our embedding center, expanding their versatility within laboratory workflows.

### Electrical Specifications

The tweezers operate on a 24V DC power supply with a current of 0.34A.

# Cassettes Trim

## Cassette's cleaning instrument



### Cassette Cleaning Instrument Overview

The cassette cleaning instrument is designed to remove excess paraffin from cassettes, facilitating easy insertion into the clamp of the microtome. This process eliminates the need for manual scraping and ensures a more efficient workflow.



### Advantages of the Cassette Cleaning Instrument

- Removes the need to scratch cassettes with a knife, thereby streamlining the cleaning process.
- Prevents paraffin waste from becoming airborne, which contributes to a cleaner and safer working environment.
- Protects the numbers and barcodes on cassettes from being scratched, ensuring accurate identification and tracking.

### Technical Data

<b>Weight</b>	2.7 kg
<b>Dimensions (Depth x Width x Height)</b>	240 x 160 x 170 (mm)
<b>Maximum Temperature</b>	75 °C
<b>Power Supply</b>	230V, 50Hz, 0.1 KW
<b>Article Number</b>	CT200



# Mini Blue Cooler



## Mini Blue Cooler Overview

The Mini Blue Cooler is our most compact cold plate, specifically designed for efficient cooling in laboratories and research environments. It offers reliable digital temperature control, ensuring precise and consistent cooling performance for sensitive applications.

### Key Features

- Equipped with a super silent fan for quiet operation.
- Maximum temperature of -18°C to accommodate a variety of cooling needs.
- Capable of cooling up to thirty-six paraffin blocks simultaneously.
- Constructed with a durable stainless-steel frame and a stainless-steel cooling surface for long-lasting use and easy cleaning.

### Technical Data

Device Dimensions (W x D x H)	245 x 325 x 250 mm
Cooling Surface Dimensions (W x D)	180 x 260 mm
Weight	12 kg
Refrigerant	R600a
Connected Load	230V / 50Hz / 200W
Article Number	31800

### Environmental Considerations

All of our cold plates, including the Mini Blue Cooler, utilize eco-friendly natural gas as a refrigerant and incorporate advanced inverter technology for enhanced energy efficiency and reduced environmental impact.

# Blue Cooler



## The Energy-Saving Cooling Plate

### Product Overview

The Blue Cooler is an innovative energy-saving cooling plate designed to provide maximum cooling efficiency with a minimal footprint. Engineered for both performance and sustainability, this device features the largest cooling surface in its class while maintaining compact dimensions. With energy consumption as low as 0.07 KW at -15 °C, the Blue Cooler is ideal for applications that demand reliable and eco-friendly temperature control.

### Key Features

- Largest cooling surface with the smallest footprint
- Extremely low energy consumption: only 0.07 KW at -15 °C
- Digital temperature control for precise operation
- Super silent fan ensures quiet performance
- Maximum temperature: -18 °C
- Capacity to cool up to 96 paraffin blocks simultaneously
- Durable frame and cooling surface made of stainless steel

### Technical Data

Device Dimensions (W x D x H)	415 x 460 x 300 mm
Cooling Surface Dimensions (W x D)	345 x 344 mm
Refrigerant	R600a
Weight	14 kg
Connected Load	230V / 50Hz / 300W
Article Number	31400

### Eco-Friendly Cooling Technology

Blue Cooler cold plates are designed with environmental responsibility in mind. They utilize eco-friendly natural gas (R600a) as a refrigerant and incorporate advanced inverter technology, ensuring efficient and sustainable operation.

### Alternative Model: Technical Data

Device Dimensions (W x D x H)	245 x 325 x 250 mm
Cooling Surface Dimensions (W x D)	180 x 260 mm
Refrigerant	R600a
Weight	12 kg
Connected Load	230V / 50Hz / 200W
Article Number	31800



# Para Cooler A



## “Para Cooler A” - Flat Table Cooling Plate

The Para Cooler A flat table cooling plate is designed to provide efficient and reliable cooling for laboratory applications. This unit features advanced digital temperature control, allowing precise management of cooling levels to meet various needs. Its operation is enhanced by a super silent fan, ensuring a quiet working environment without sacrificing performance.

The cooling plate is capable of reaching temperatures as low as  $-18^{\circ}\text{C}$ , making it suitable for rapidly cooling paraffin blocks. With the capacity to accommodate up to 96 paraffin blocks simultaneously, it offers high throughput for demanding laboratory workflows. The robust frame and cooling surface are both constructed from durable stainless steel, ensuring longevity and ease of cleaning.

### Technical Data

<b>Device Dimensions (W x D x H)</b>	415 x 600 x 280 mm
<b>Cooling Surface Dimensions (W x D)</b>	345 x 344 mm
<b>Refrigerant</b>	R290
<b>Weight</b>	24 kg
<b>Connected Load</b>	230V / 50Hz / 300W
<b>Article Number</b>	31000

### Eco-Friendly Cooling Technology

Para Cooler cold plates are designed with environmental responsibility in mind. They utilize eco-friendly natural gas (R290) as a refrigerant.

# Para Cooler O



## “Para Cooler O” - Table Cooling Plate with Cooling Tub

The Para Cooler O is a highly efficient table cooling plate equipped with a cooling tub, designed to meet demanding refrigeration needs. This advanced device features digital temperature control, allowing precise regulation of cooling conditions for optimal performance.

The unit is fitted with both wall and floor cooling capabilities, ensuring versatile installation options to accommodate various operational environments. A super silent fan is integrated into the system, providing powerful air circulation while maintaining minimal noise levels for a quieter workspace.

The Para-Cooler O achieves a maximum temperature of -35°C, making it suitable for applications that require deep cooling. It is capable of simultaneously cooling up to 264 paraffin blocks, significantly increasing productivity and efficiency.

Both the frame and the cooling tub are constructed from high-grade stainless steel, ensuring durability, hygiene, and easy maintenance.

### Technical Data

Device Dimensions (WxDxH)	415 x 600 x 320 mm
Cooling Surface Dimensions (WxDxH)	340 x 325 x 50 mm
Refrigerant	R290
Weight	32 kg
Connected Load	230V / 50Hz / 300W
Article Number	30031

### Eco-Friendly Cooling Technology

Para Cooler cold plates are designed with environmental responsibility in mind. They utilize eco-friendly natural gas (R290) as a refrigerant.

# Blue Cooler Tower

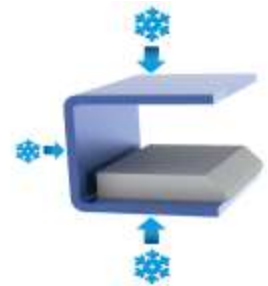


## Overview

The Blue Cooler Tower is an energy and space-saving cooling plate designed for efficient performance in demanding environments.

## Key Features

- Simultaneous cooling of up to 80 blocks
- Energy consumption is limited to only 0.07 KW at -15°C
- Digital temperature control for precise cooling management
- Effective tissue cooling capability
- Super silent fan ensures minimal noise during operation
- Maximum achievable temperature: -18°C
- Frame constructed from robust stainless steel
- Cooling surface also made of durable stainless steel



## Technical Data

<b>Device Dimensions (W x D x H)</b>	350 x 300 x 510 mm
<b>Refrigerant</b>	R290
<b>Weight</b>	14 kg
<b>Connected Load</b>	230V / 50Hz / 300W
<b>Article Number</b>	31600

## Eco-Friendly Cooling Technology

Para Cooler cold plates are designed with environmental responsibility in mind. They utilize eco-friendly natural gas (R290) as a refrigerant.

# Para Cooler TW



## **“Para Cooler TW” – Mobile cooling plate with cooling tub**

The Para Cooler TW is a highly efficient table cooling plate equipped with a cooling tub, designed to meet demanding refrigeration needs. This advanced device features digital temperature control, allowing precise regulation of cooling conditions for optimal performance.

The cooling plate is mounted on castors, allowing it to be easily rolled and conveniently positioned under a laboratory table to save valuable workspace.

The Para-Cooler TW achieves a maximum temperature of -35°C, making it suitable for applications that require deep cooling. It is capable of simultaneously cooling up to 264 paraffin blocks, significantly increasing productivity and efficiency. Both the frame and the cooling tub are constructed from high-grade stainless steel, ensuring durability, hygiene, and easy maintenance.

### **Technical Data**

<b>Device Dimensions (WxDxH)</b>	485 x 610 x 670 mm
<b>Cooling Surface Dimensions (WxDxH)</b>	340 x 325 x 50 mm
<b>Refrigerant</b>	R290
<b>Weight</b>	42 kg
<b>Connected Load</b>	230V / 50Hz / 300W
<b>Article Number</b>	32002

### **Eco-Friendly Cooling Technology**

Para Cooler cold plates are designed with environmental responsibility in mind. They utilize eco-friendly natural gas (R290) as a refrigerant.

# Waterbath round



## Design and Safety Features

The round water bath is engineered with an extra wide edge, which provides increased stability during operation and makes the unit easier to handle. This thoughtful design element ensures users can confidently transport and position the water bath as needed.

For enhanced safety, the water bath features a splash-proof on/off switch. This important addition helps protect the electrical components from moisture, reducing the risk of electrical faults or accidents during use.

In addition, the water bath is equipped with a heating control light. This indicator allows users to easily observe whether the heating element is currently active, offering a clear visual cue regarding the operational status of the unit.

## Technical Data

Internal dimensions	Outside dimensions	Weight	Capacity	Temperature max.	Power ratings	Article No.
200 x 60mm	330 x 110mm	2.7 kg	1.7 L	90°C	230V / 50Hz / 250W	WBR

# Square Water Bath



## Features

The square water bath is equipped with a digital display that allows users to easily monitor temperature settings. It utilizes microprocessor-controlled temperature regulation, ensuring precise and consistent temperature control throughout its operation.

- Maximum Temperature: 70°C
- With or without illumination
- Capacity: 1.8 liters
- Weight: 3.1 kilograms

## Technical Data

Internal dimensions	External dimensions	Weight	Capacity	Temp. Max	Connection values	Article No.
195 x 195 x 50mm	286 x 255 x 80mm	3.1 kg	1.8L	70 °C	230V / 50Hz / 200W	WBQ
195 x 195 x 50mm	286 x 255 x 80mm	3.1 kg	1.8L	70 °C	230V / 50Hz / 200W	WBQ1.8L illuminated

# Waterbath with illumination



## Features

The water bath is designed with a practical square shape, allowing for efficient use of space within the laboratory environment. Integrated illumination enhances visibility, making it easier to observe the contents during operation.

User-friendly digital controls are provided, enabling precise adjustment of settings. A temperature display is included to ensure accurate and convenient monitoring of the water bath's operating conditions.

For added convenience, the unit features designated storage areas for slides located both at the front and the rear. This thoughtful design detail supports efficient workflow and organization during laboratory procedures.

## Technical Data

Water bath dimensions	260 x 250mm height 60mm
Outside dimensions	B320 x L440 x H90mm
Temperature max.	60 °C
Capacity	2.5 liter
Weight	5.1 Kg
Connected load	230V / 50Hz / 500W
Article No.	WBQL2.5



# Waterbath with illumination



## Features of the Square Water Bath with Illumination

The square water bath is equipped with integrated lighting, offering optimal visibility during use. It features a digital temperature control and display, allowing precise regulation and easy monitoring of water temperature throughout experiments. For convenience, the water bath is designed with a removable glass pan, making water changes straightforward and ensuring that only the glass pan needs to be handled during transport. The glass pan is also dishwasher safe, facilitating efficient cleaning and maintenance. Additionally, the water bath includes a side shelf, which provides a dedicated space for storing slides during procedures.

Technical Data	Details
Water bath dimensions	210 x 210mm Height 55mm
Overall dimensions	W310 x L355 x H170mm
Temperature max.	60 °C
Power ratings	230V / 50Hz / 200W
Article No.	WBRL

# Heated water bath plate with lighting



## Features

The unit is equipped with a digital temperature display and control system, allowing for precise monitoring and adjustment of the water bath temperature. The water bath itself is removable; only the glass pan needs to be moved when changing the water, making maintenance straightforward. The glass pan is safe for dishwasher cleaning, ensuring easy and thorough sanitation. Additionally, a convenient side shelf is included to securely hold slides during use.

Technical Data	Details
<b>Waterbath dimensions</b>	210 x 210mm Height 55mm
<b>Overall dimensions</b>	W310 x L355 x H170mm
<b>Temperature max.</b>	60 ° C
<b>Power ratings</b>	230V / 50Hz / 200W
<b>Article No.</b>	WBST2000

# Heated Plate



## Key Features

The heated plate offers a versatile range of features designed for efficient and precise operation. It is equipped with a slide dryer, making it ideal for applications that require rapid and uniform drying of slides. In addition, the integrated stretching bench provides a convenient surface for preparing and handling materials.

A digital temperature display allows users to easily monitor the current operating temperature, ensuring optimal conditions during use. The system further supports precise digital temperature control, enabling users to set and maintain the desired temperature accurately.

With a low-profile working surface measuring only 45 mm in height, the heated plate is accessible and ergonomic, allowing for comfortable use over extended periods.

## Technical Data

Dimensions	Working Area	Working Height	Temperature Range	Power Ratings
550 x 180 x 45mm (L x W x H)	155 x 450 mm	45 mm	30 °C – 80 °C	230V / 50Hz / 300W

# Paraffin Dispenser



## Key Features

- **Large Capacity:** The paraffin dispenser offers a maximum capacity of 15 liters, making it suitable for laboratories and facilities with high sample volumes.
- **Optional Built-In Filter:** It includes an optional built-in filter specifically designed to process cutting waste efficiently, helping to maintain the quality and purity of the paraffin.
- **Adjustable Temperature Range:** The temperature can be continuously adjusted from 20°C to 70°C, allowing precise control to suit various laboratory needs.
- **Heated Outlet Faucet:** The dispenser features a heated outlet faucet to ensure smooth and consistent flow of paraffin during dispensing.
- **PTC Heater with Overheat Protection:** For enhanced safety, the unit is equipped with a PTC (Positive Temperature Coefficient) heater that includes overheat protection, minimizing the risk of overheating.
- **Stainless Steel Lid:** The dispenser comes with a durable stainless steel lid, providing both strength and resistance to corrosion.

## Technical Data

Capacity	Dimensions (L x W x H)	Weight	Power Ratings	Article No.
max. 15l	380 x 420 x 520 mm	14kg	230V / 50Hz / 550W	70010

# Liquid Dispenser

for non flammable liquids



## Key Features of the Liquid Dispenser

The liquid dispenser is equipped with an integrated exhaust system, making it one of the leading options for bottling non-flammable liquids in modern laboratory environments. The dispenser allows for precise volume adjustment, enabling users to fill bottles or liquid containers of various sizes efficiently. Additionally, it supports the pre-filling of formalin containers, enhancing workflow efficiency.

## Operator Safety

To ensure user safety, the dispenser includes features designed to protect operators from exposure to harmful vapors. This is achieved through an exhaust system that incorporates an activated charcoal filter, which effectively captures and neutralizes hazardous emissions.

## Precision and Control

The dispenser is equipped with electronic bottling controls that provide adjustable dispensing volumes ranging from 1 ml to 1000 ml. This allows for accurate and customizable filling, accommodating a wide spectrum of laboratory requirements.

## Durability and Optional Accessories

A stainless steel check valve with an integrated filter is included to ensure reliable operation and maintain the integrity of dispensed liquids. For added convenience, an optional hand drainage faucet is also available.

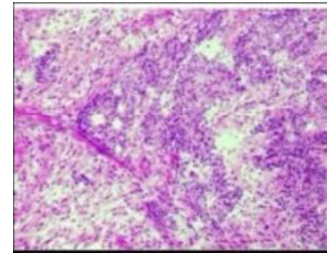


Dimensions (L/W/H)	Weight	Power supply
300 x 220 x 160 mm	3,5 Kg	230V, 50Hz, 0,2 KW

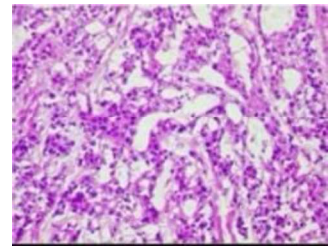
# Fast Freezing Cryofix -45°C

## Snap Freezing

Device for rapid freezing of tissue samples.



**Liquid Nitrogen**



**Dry Ice**



**Isopentane**

### Fast freezing unit Cryofix -45 °C

Instrument for rapid tissue sample freezing.

- Compatible with all standard cryostats
- Cools isopentane in retort to -45 °C
- Minimizes ice crystal formation
- Enables immediate shock freezing, reducing time
- Safer than liquid nitrogen
- Compact for installation near cryostat
- Suitable alternative to formalin fixation for sensitive antigens

### Technical Data

LxWxH	Weight	Power supply	Article No.
300x410x460mm	31Kg	230V / 50Hz / 0.3KW	038001

# Incubator / Slide dryer



## Features

Our smallest incubator and slide dryer is designed to fit into any laboratory environment, offering maximum convenience without sacrificing performance.

- Temperature Range: Operates from room temperature up to +70°C, providing flexibility for various applications.
- Temperature Setting Accuracy: Allows precise temperature adjustments with a setting accuracy of  $\pm 1$  degree.
- Built-In Fan: Equipped with an integrated fan to ensure even heat distribution throughout the chamber.
- Stainless Steel Inner Body: The interior is made of durable stainless steel, ensuring longevity and easy cleaning.
- Removable and Height-Adjustable Shelves: Includes two stainless steel shelves that can be removed or adjusted in height to accommodate different items.
- Stainless Steel Paraffin Collecting Basin: Features a dedicated basin made of stainless steel for the collection of paraffin, facilitating maintenance and cleanliness.

## Technical Data

<b>Overall dimensions (L x W x H)</b>	<b>340 x 345 x 525 mm</b>
<b>Internal dimensions (L x W x H)</b>	230 x 275 x 325 mm
<b>Operating voltage</b>	230 V / 50 Hz
<b>Power consumption</b>	100 VA
<b>Weight</b>	28 kg
<b>Article No.</b>	90002



# Quick-Fix M



## Fast Fixation Instrument for Large Tissue Samples

- Designed for rapid fixation of tissue samples up to **20 cm in diameter**
- Ensures **excellent fixation quality in minimal time — without the use of microwaves**
- **Adjustable temperature range:** from room temperature up to **60 °C**
- Equipped with an **automatic pressure and vacuum system**
- Features **continuous centrifugal rinsing** for optimal tissue penetration
- Integrated **small particulate filtration system**
- **Retort capacity: 15 L** of formalin
- Allows **simultaneous fixation** of multiple tissue samples
- Includes a **specialized basket** for large samples with a **thickness of 5–10 mm**

## Special Basket for Breast Tissue

### Technical Data

(W / L / H): 500x420x520 mm

Weight: 30 kg

Power ratings: 230 V; 50 Hz; 0.8 KW

Article No.: 40070



# Quick-Fix



## Fast Fixation Instrument for Small and Medium Tissue Samples

- Efficient Fixation Process: Significantly reduces fixation time to a minimum, ensuring optimal preservation quality.
- Integrated Tissue Filter: Equipped with a built-in filter system for reliable tissue handling.
- Automatic Vapor Extraction: Formalin vapors are automatically removed for improved safety and comfort.
- Optional Add-On: Available with an optional downstream activated carbon filter for enhanced vapor absorption.
- Ideal for Fatty Tissue: Excellent performance with fatty or delicate samples.
- Digital Temperature Control: Provides precise and stable temperature regulation.
- Capacity: Holds up to 75 cassettes.

### **Technical Data**

(W / L / H): 435 x 290 x 440 mm

Weight: 22 kg

Power ratings: 230 V; 50 Hz; 0.3 KW

# Paraclean PLUS



## Cleaner for Stainless Steel Surfaces

This product removes paraffin from stainless steel surfaces. Paraclean PLUS is a cleaning and care product designed for stainless steel as well as all hard surfaces. Its base is completely odorless and has been subtly scented with a fresh lemon fragrance.

Article No. 20088

## Cold Spray – Ice Spray

Cold Spray – Ice Spray is available in a 400 ml container and is capable of cooling surfaces down to  $-45^{\circ}\text{C}$ . Each carton contains 12 pieces.



Article No. KS400

# Certificate

**TAW.CERT**  
Partner für Zertifizierungen.

The certification body TAW Cert GmbH  
Certification Company for Management-Systems and Personnel  
hereby certifies that the organisation



## Weinkauff Medizin & Umwelttechnik

Gewerbepark Hüll 17  
D-91322 Gräfenberg

Scope  
**Manufacture and sale of laboratory equipment**

has successfully established and is working in accordance with  
a quality management system.

A certification audit on 15. Jul 2025 provided proof  
that all requirements according to

# DIN EN ISO 9001:2015

have been satisfied.

Initial certification: 30. Aug 2010

This certificate is valid from 30. Aug 2025 to 29. Aug 2028

Certificate Registration No.: QM-020610-EN

Altdorf, 11. Aug 2025

sign. Reno Nagel,  
CEO TAW Cert GmbH  
(This document is valid without signature according to § 37 para. 3 VwVfG)







Weinkauff Medizintechnik  
Gewerbepark Hüll 17  
91322 Gräfenberg

[sales@weinkauff-medizintechnik.de](mailto:sales@weinkauff-medizintechnik.de)  
[www.weinkauff-medizintechnik.de](http://www.weinkauff-medizintechnik.de)